



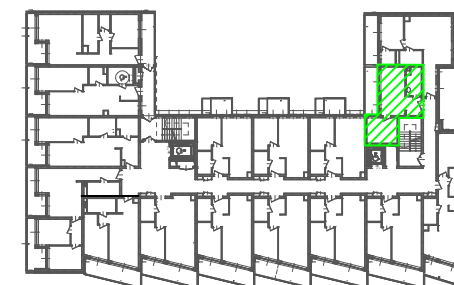
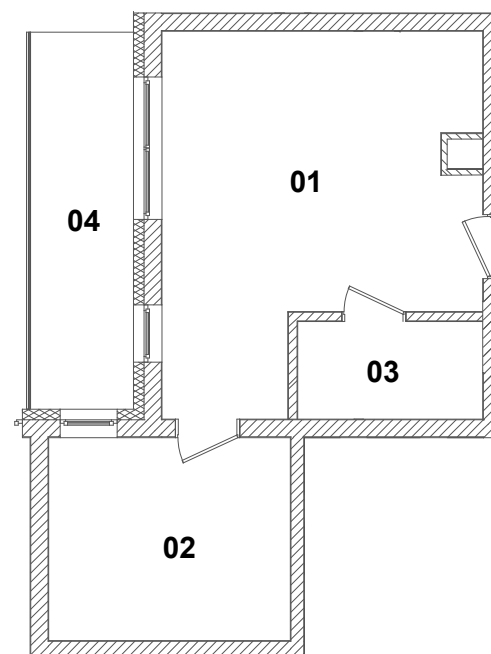
LOKAL MIESZKALNY

**NR 01.13**

I PIĘTRO

**ZESTAWIENIE POWIERZCHNI**

1. POKÓJ Z ANEKSEM KUCHENNYM	17,30m <sup>2</sup>
2. POKÓJ	9,51m <sup>2</sup>
3. ŁAZIENKA	3,73m <sup>2</sup>
SUMA	30,54m <sup>2</sup>
4. BALKON	7,74m <sup>2</sup>



SKALA 1:100