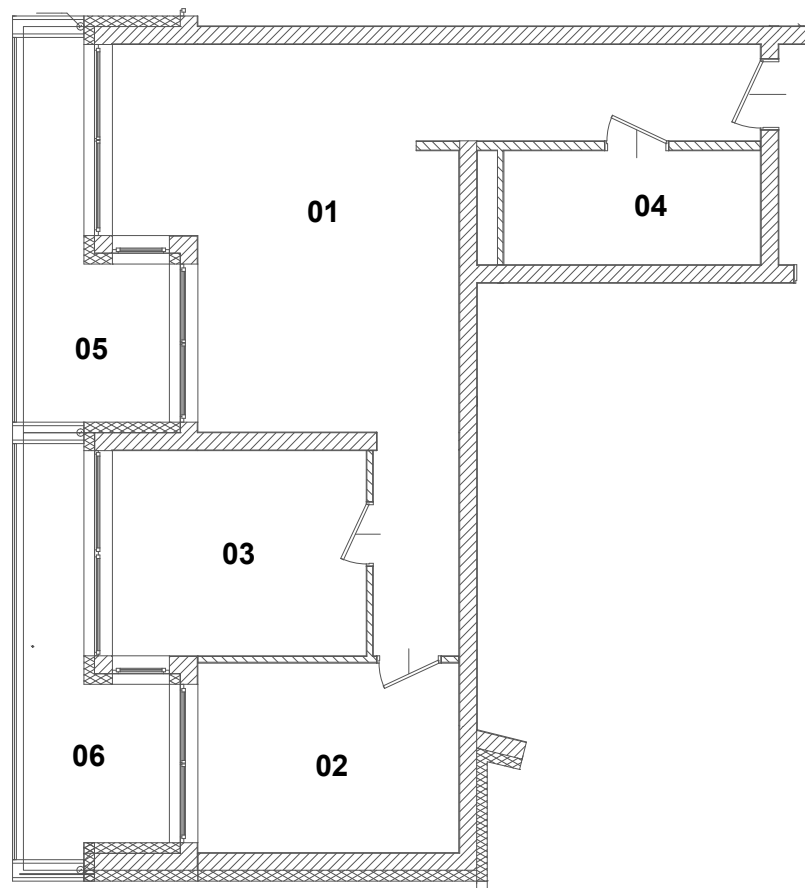




LOKAL MIESZKALNY

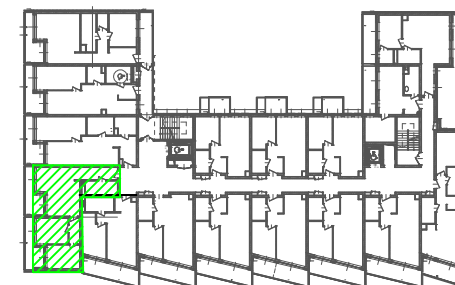
**NR 03.04**

III PIĘTRO



**ZESTAWIENIE POWIERZCHNI**

1. POKÓJ Z ANEKSEM KUCHENNYM	32,75m <sup>2</sup>
2. POKÓJ	9,67m <sup>2</sup>
3. POKÓJ	10,12m <sup>2</sup>
4. ŁAZIENKA	5,84m <sup>2</sup>
SUMA	58,38m <sup>2</sup>
5. BALKON	10,67m <sup>2</sup>
6. BALKON	11,54m <sup>2</sup>



SKALA 1:100