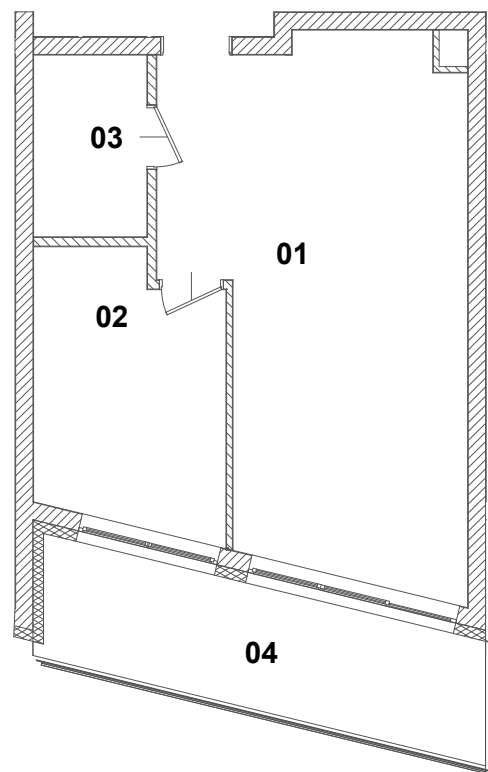




LOKAL MIESZKALNY

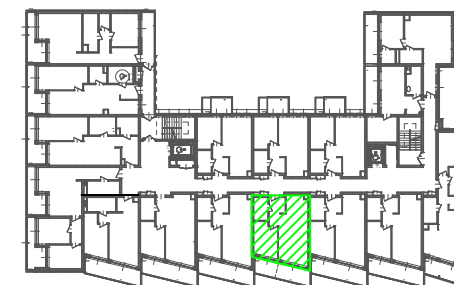
NR 03.08

III PIĘTRO



ZESTAWIENIE POWIERZCHNI

| | |
|------------------------------|---------------------|
| 1. POKÓJ Z ANEKSEM KUCHENNYM | 27,78m ² |
| 2. POKÓJ | 9,78m ² |
| 3. ŁAZIENKA | 4,01m ² |
| SUMA | 41,57m ² |
| 4. BALKON | 11,09m ² |



SKALA 1:100