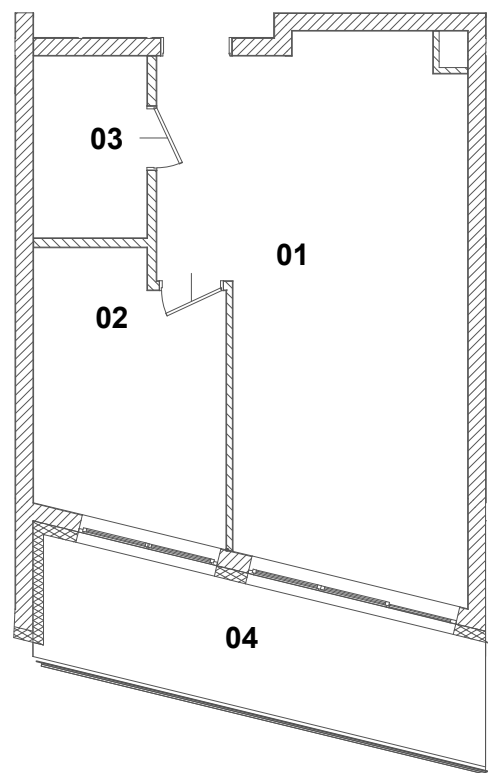




LOKAL MIESZKALNY

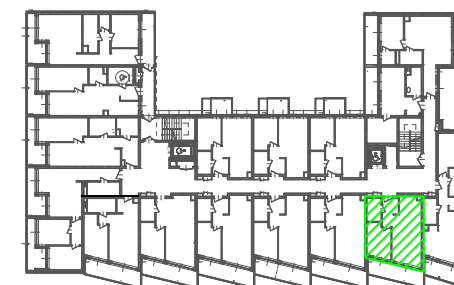
**NR 03.10**

III PIĘTRO



**ZESTAWIENIE POWIERZCHNI**

1. POKÓJ Z ANEKSEM KUCHENNYM	27,87m <sup>2</sup>
2. POKÓJ	9,80m <sup>2</sup>
3. ŁAZIENKA	4,01m <sup>2</sup>
SUMA	41,68m <sup>2</sup>
4. BALKON	11,09m <sup>2</sup>



SKALA 1:100