



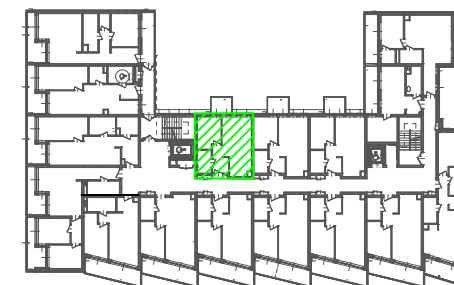
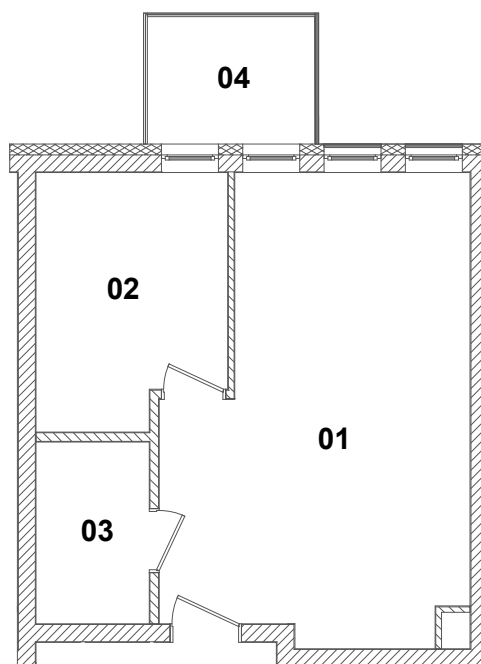
LOKAL MIESZKALNY

**NR 03.16**

III PIĘTRO

**ZESTAWIENIE POWIERZCHNI**

1. POKÓJ Z ANEKSEM KUCHENNYM	24,62m <sup>2</sup>
2. POKÓJ	8,98m <sup>2</sup>
3. ŁAZIENKA	4,03 m <sup>2</sup>
SUMA	37,63m <sup>2</sup>
4. BALKON	4,67m <sup>2</sup>



SKALA 1:100